



# MONTHLY MEMBERSHIP PROGRESS REPORT

District 12 O

Results as of: 8/31/2015

GMT: HARVEY WHITLEY

LOCATION TENNESSEE

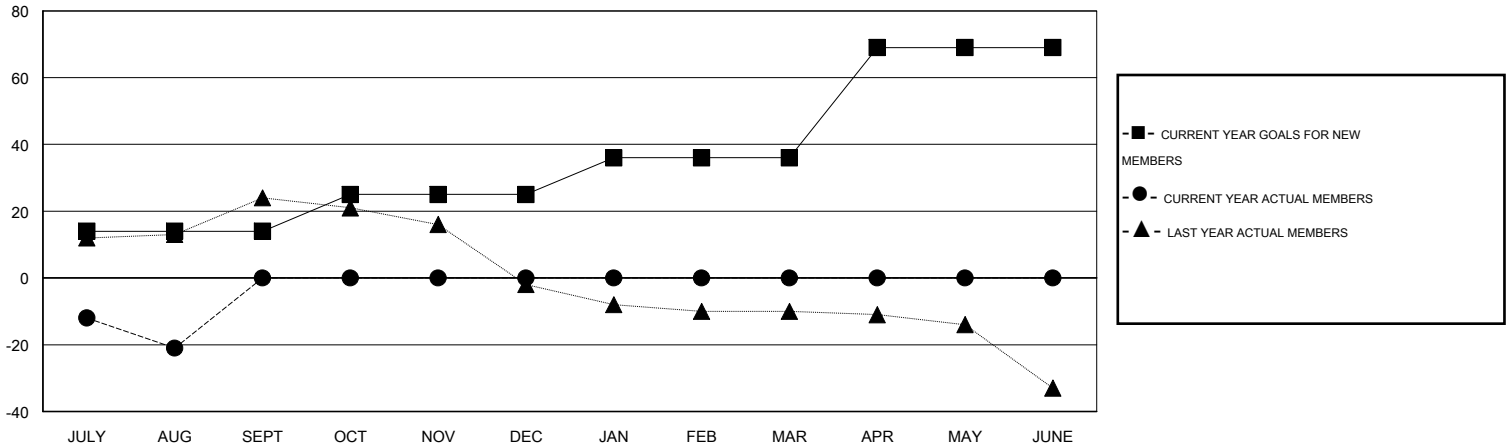
GMT CA 1

Clubs					Members				
RESULTS FOR 2015-2016					RESULTS FOR 2015-2016				
QUARTER	NEW CLUB GOAL	NEW CLUBS	DROPPED CLUBS	NET GAIN/LOSS	QUARTER	NEW MEMBER GOAL	CHARTER AND NEW MEMBERS ADDED	DROPPED MEMBERS	NET GAIN/LOSS
JULY/AUG/SEPT	0	0	1	-1	JULY/AUG/SEPT	14	11	32	-21
OCT/NOV/DEC	0	0	0	0	OCT/NOV/DEC	11	0	0	0
JAN/FEB/MAR	0	0	0	0	JAN/FEB/MAR	11	0	0	0
APR/MAY/JUNE	1	0	0	0	APR/MAY/JUNE	33	0	0	0

GOALS AND ACTUAL NEW CLUBS CUMULATIVE



GOALS AND ACTUAL MEMBERS CUMULATIVE



DROPPED CLUBS: 1	8 CLUBS OF 39 ADDED 1 OR MORE NEW MEMBERS	<u>GENDER DISTRIBUTION</u>	
<u>DROPPED MEMBERS</u>		MALE	582 (65.10%)
DECEASED	0	FEMALE	312 (34.90%)
CLUB CANCELLED	7	<u>FAMILY UNIT MEMBERS</u> 225	
OTHER	25	<u>HEAD OF HOUSEHOLD</u> 112	
<b>TOTAL</b>	<b>32</b>	<u>NON-HEAD OF HOUSEHOLD</u> 113	

[CLICK HERE FOR HEALTH ASSESSMENT DATA](#)